

## Hopewell Photography Collections - Anthracite Railroads Historical Society

Rev. 8/12/2022 - D. Dixon

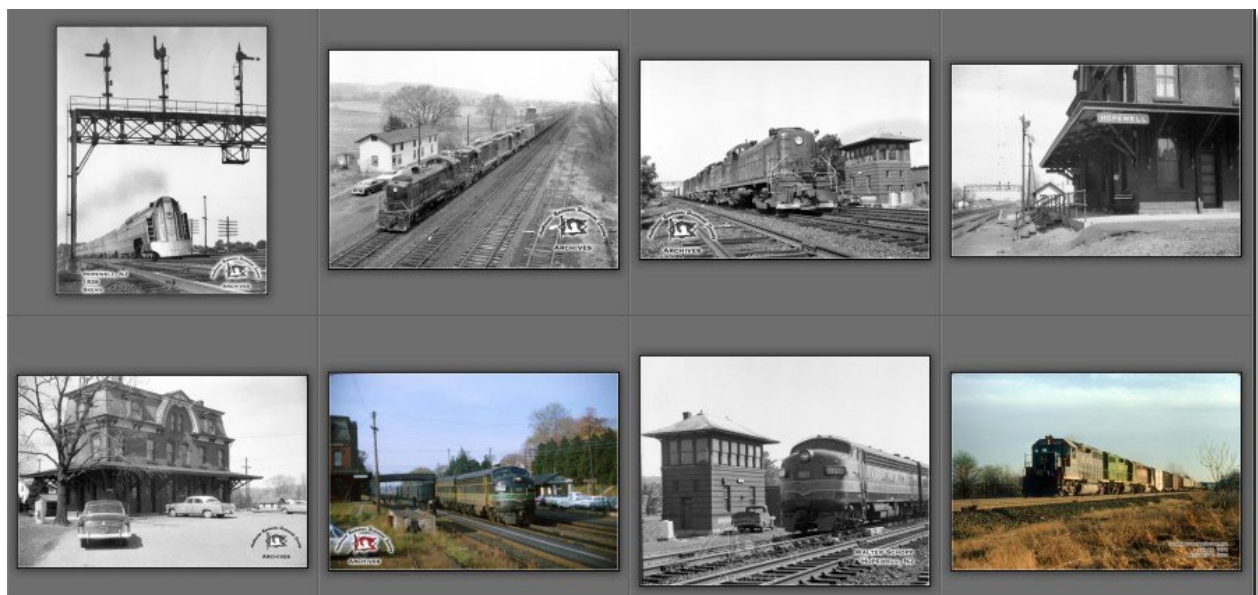
Photographs of Hopewell area railroad activity from the collection of the Anthracite Railroads Historical Society (ARHS). Shared with the kind permission of the ARHS. Some images are from the public collection on the ARHS website, and some were provided from the ARHS private collection.

The ARHS consists of almost 1,000 authors, historians, railroad employees, photographers, model railroaders, and just plain rail fans who share an interest in the railroads that served the anthracite coal mining region of eastern Pennsylvania: Lehigh Valley Railroad, Reading Company, Central Railroad of New Jersey, Delaware Lackawanna & Western, Lehigh & New England, Lehigh & Hudson River, and affiliated railroads.

ARHS - <https://www.anthracerailroads.org/>

ARHS Archives - <http://archives.anthracerailroads.org/>

Listed in approximate chronological order, with information on the trains, photographer, and date as provided. Dates otherwise approximated based on the ages of cars in the scene, or from other evidence from the visible railroad equipment.



Hopewell area railroad photos from the collection of the Anthracite Railroads Historical Society (ARHS)



### 1938 - RDG 4-6-3 - Signal Towers (Skean)

Photo taken by professional photographer (print marked Skean, 1938) of a Reading 4-6-2 *Pacific* leading the *Crusader* through Hopewell, NJ.

- Facing east (telegraph wires on south side)
- Under signal towers - not at Hopewell station - perhaps towards Skillman?



### 1950s? - Hopewell Station

Hopewell Station from side

- Facing east -Housing & HOPE tower in distance
- Fence in middle of track, 4 tracks
- Side signals and signal bridge
- Western Union telegraph sign
- 1950s equipment?



### 1950s - RDG 503 - Housing (Schopp)

Reading ALCO RS3 #503 leads EMD GP7s #636, #613 and #619 past HOPE Tower in Hopewell, NJ. (ARHS #429)

Photographer: Walter Schopp

- Facing east past station
- Long train, 4 engines, switches front of tower
- White housing and HOPE tower beyond
- Early 1950s (Cars)



### 1950s - RDG 503 - HOPE tower

Reading 503 - with 4 engines (ARHS #429)

- Facing west towards station
- HOPE signal tower on right
- Early 1950s (International truck)

c1955 - Hopewell Station

Hopewell Station from street

- Passenger shed to left, freight shed to right
- c1955 cars

1960s - RDG 900 - Passenger

Boarding passenger train to NY

- Facing west - Passenger shelter across
- c1960s?

1970s - RDG 900 - HOPE Tower (Schopp)

Reading EMD FP7A #900 at HOPE Tower in Hopewell, NJ. (ARHS #429)  
 Photo is likely in the 1986 - 1967 time frame.  
 Photographer: Walter Schopp

- Facing east at HOPE signal tower

1976 - B&O 4045 - Pennington Area (Jahn)

Baltimore and Ohio - EMD GP40 - BO 4045  
 Reading train #682 at Pennington, NJ  
 February 28, 1976  
 Photographer: Richard W. Jahn

- Not near station - outside Pennington?